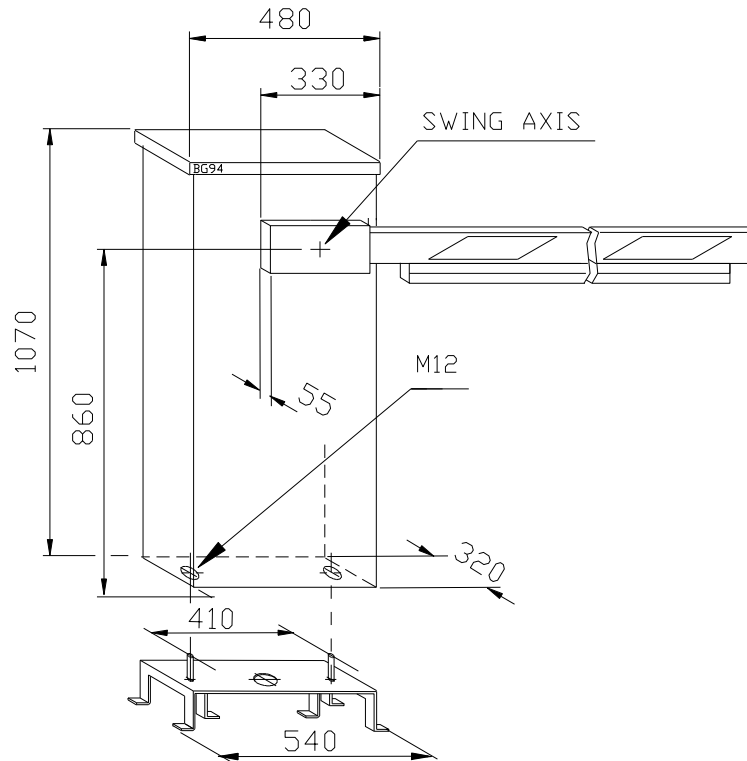


AUTOMATIC BARRIER MODEL KUBAR 8

BARRIER ELECTROMECHANICAL
HEAVY DUTY



TECHNICAL NOTES: Electrowelded and zinc-plated steel support frame. Panels in 12/10 prepainted aluminium. Locking cover for access to emergency manual-command. Anodized aluminium arm 80x30x2 with red reflective bands. Single phase motor 230V; 50 Hz; 200 W; 1400 RPM.

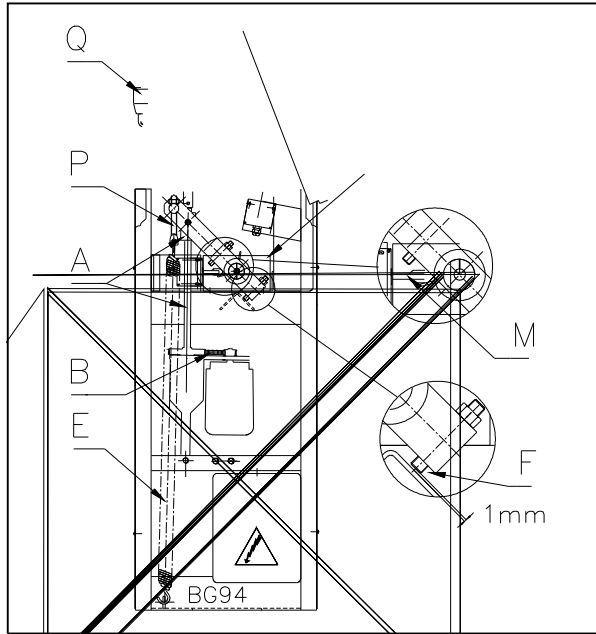
Capacitor 10 μ F. Belt and steel screw transmission with the nut in the anti-friction material. Adjustable opening and closing limit-switches incorporated. Emergency operation device with handle for manual-command. Control box incorporated and pre-wired.

WEIGHT: 80 kg. excluding arm. Opening: 12 sec.

NOTE: Applying the suspended grate reduces the maximum arm's length by 1,5 metres.

APPLYING ANY EXTRA WEIGHT TO THE ARM MAY COMPROMISE BARRIER'S OPERATION AND DURATION, LIKE THE INSTALLATION OF ARMS WHICH ARE NOT ERREKA ORIGINAL.

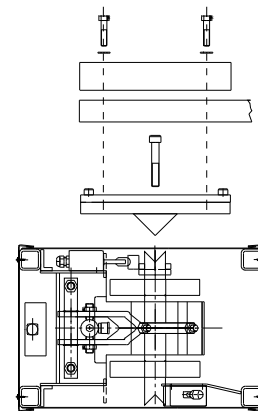
WARNING: To read the “ AVVERTENZE UNAC ” book enclosed, and follow it. Reserve the right to change these data, that are indicatives.



- A=Screw and nut.
- B=Pignon and belt transmission.
- C=Handle-safety-device.
- E=Counterbalancing-spring.
- F=Stopper-opening.
- L=Lever-limit-switch.
- M=Limit-switch.
- N=Ball-bearings supports.
- P=Adjuster-counterbalancing.
- Q=Handle manual-device.

INSTALLATION: To fix the anchor-plate horizontal with the screws perpendicular to the way. To prepare the cables-pipeline. To fix the Frame on the anchor-plate. To place the arm into the jaws, after fixation of the jaws very hard. To open manually, with the handle and to adjust, if it is necessary, the limit-switches, the levers etc. To connect electrically regarding to the Standards (Italy UNI 8612, IEC etc.). To check the right rotation of the motor with regard to the limit-switches and the devices. To check the handle-safety-device. To connect at the Ground. Don't place anything on the arm (that will change the counterbalancing). Don't give the controls (Radio, Key, etc.) to the children. To lubricate mechanical parts.

FIXATION JAW SCREW HARDLY



MAINTENANCE: To check, periodically, the safety-devices and the limit-switches. To lubricate the mechanical parts. To check the only spare-parts and accessories original Casit.

NORMALLY THE BARRIER IS ALREADY ADJUSTED AND BALANCED, IF NECESSARY: To disconnect the lever from the nut, to check the balancing, adjusting the spring. To reconnect on sequence. To adjust the lever-limit/switch so that the limit/switch will be switched a just little time before the shock-absorber will be compressed.

THE MAINTENANCE MUST EFFECTUED ONLY BY QUALIFIED PERSONNEL.

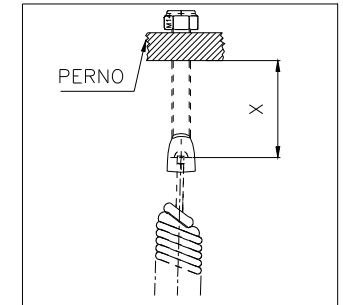
WARNING: To read the " AVVERTENZE UNAC " book enclosed, and follow it. Reserve the right to change these data, that are indicatives.

MUELLE A SOLICITAR EN BASE A LA LONGITUD DE BARRA

Cod. NN145F

KUBAR 8 12"

TUBO RECTANGULAR ALUMINIO 80 x 30 x 2 (1,145 Kg/m)



PROLONGACION EN ACERO PARA UNA LONGITUD L = 2400 mm Y TIRANTE FALDON PARA UNA LONGITUD DE=4200mm
 L = LONGITUD TOTAL BARRA (medida en m)
 X = MEDIDA DEL CENTRO DEL AGUJERO DEL TIRANTE A LA HORQUILLA (medida en mm)

		NORMAL				CON FALDON			
		Sin soporte movil		Con soporte movil		Sin soporte movil		Con soporte movil	
Solo tubo aluminio Only aluminium	Longitud barra	Tipo de muelle	X	Tipo de muelle	X	Tipo de muelle	X	Tipo de muelle	X
		4	3 muelles, hilo Ø 2,5 * MTK5Z						
	4,5								
	5	1 muelle, hilo Ø 5,5 MTK68	75	1 muelle, hilo Ø 6 MTK90	75	2 muelles, hilo Ø 5,5 MTK68	75	1 muelle, hilo Ø 7 MTK165	75
	5,5	1 muelle, hilo Ø 5,5 MTK68	75	1 muelle, hilo Ø 6 MTK90	75	2 muelles, hilo Ø 5,5 MTK68	75	1 muelle, hilo Ø 7 MTK165	75
	6	1 muelle, hilo Ø 5,5 MTK68	55	1 muelle, hilo Ø 6 MTK90	50	2 muelles, hilo Ø 5,5 MTK68	70	2 muelles, hilo Ø 6 MTK90	75
	6,5	1 muelle, hilo Ø 6 MTK90	60	2 muelles, hilo Ø 5,5 MTK68	75	1 muelle, hilo Ø 5.5 MTK68	75	1 muelle, hilo Ø 5.5 MTK68	70
						1 muelle, hilo Ø 7 MTK165	75	1 muelle, hilo Ø 7 MTK165	70
Con prolongacion acero With steel prolongation	7	2 muelles, hilo Ø 6 MTK90	75	2 muelles, hilo Ø 6 MTK90	50	1 muelle, hilo Ø 6 MTK90	50	2 muelles, hilo Ø 7 MTK165	75
						1 muelle, hilo Ø 7 MTK165	50		
	7,5	2 muelles, hilo Ø 6 MTK90	70	1 muelle, hilo Ø 6 MTK90	75	2 muelles, hilo Ø 7 MTK165	75	2 muelles, hilo Ø 7 MTK165	50
						1 muelle, hilo Ø 7 MTK165	75		
	8	2 muelles, hilo Ø 6 MTK90	75	1 muelle, hilo Ø 6 MTK90	75	2 muelles, hilo Ø 7 MTK165	50	2 muelles, hilo Ø 7 MTK165	50
						1 muelle, hilo Ø 7 MTK165	75		

* USAR PERNO ENGANCHE MUELLE DE LA BARRA KUBAR 6 Y HACER OTROS DOS AGUJEROS Ø 8 a 90° Y ENGANCIAR DIRECTAMENTE

MUELLE A SOLICITAR EN BASE A LA LONGITUD DE BARRA

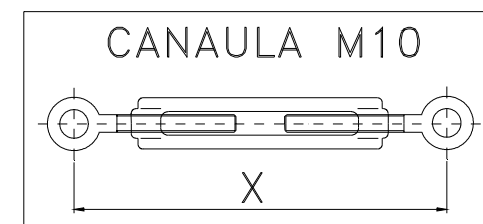
KUBAR 6 8"

TUBO RECTANGULAR ALUMINIO 80 x 30 x 2 (1,145 Kg/m)

Cod. BTCANM10

L = LONGITUD TOTAL BARRA (medida en m)

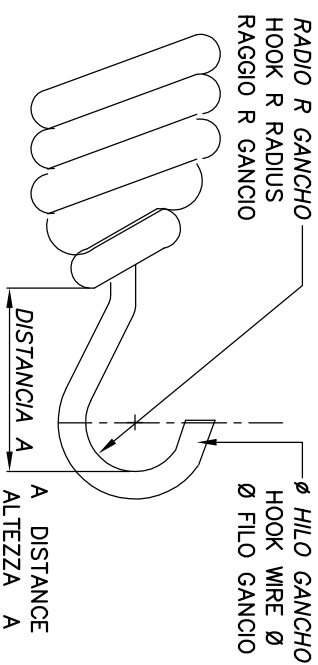
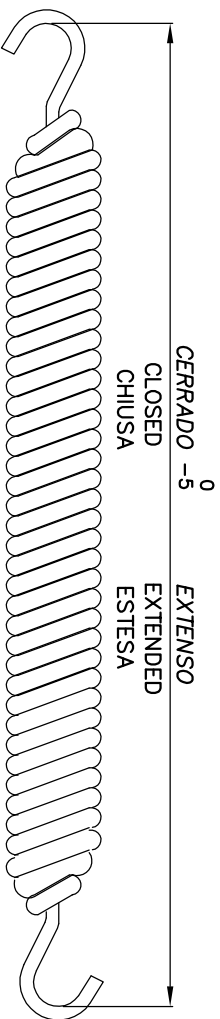
X = MEDIDA ENTRE CENTROS DEL TIRANTE (medida en mm)



Longitud barra	NORMAL				CON FALDON			
	Sin soporte movil/ Withouth mobil support		Con soporte movil/ With mobil support		Sin soporte movil		Con soporte movil	
	Tipo de muella	X	Tipo de muella	X	Tipo de muella	X	Tipo de muella	X
2,5					1 muelle, hilo Ø3,5 MTK25Z	195		
3,250			1 muelle, hilo Ø 3,5 * MTK25Z 1 muelle, hilo Ø 2,5 * MTK5Z	175				
4	1 muelle, hilo Ø 3,5 MTK25Z	180	1 muelle, hilo Ø 4,5 MTK70Z	220			1 muelle, hilo Ø 4,5 MTK70Z 1 muelle, hilo Ø 3,5 MTK25Z	205 235
4,5	1 muelle, hilo Ø 4,5 MTK70Z	220	1 muelle, hilo Ø 4,5 MTK70Z	210			2 muelles, hilo Ø 4,5 MTK70Z	210
5	1 muelle, hilo Ø 4,5 MTK70Z	200	1 muelle, hilo Ø 5 MTK85Z	195				
5,5	1 muelle, hilo Ø 5 MTK85Z	185	1 muelle, hilo Ø 3,5 MTK25Z 1 muelle, hilo Ø 4,5 MTK70Z	235 210				
6	1 muelle, hilo Ø 5 MTK85Z 1 muelle, hilo Ø 3,5 MTK25Z	215 230	1 muelle, hilo Ø 5 MTK85Z 1 muelle, hilo Ø 3,5 MTK25Z	185 215				

* BARRA CON BANDA DE SEGURIDAD NEUMATICA

LA FORMA DEL GANCHO DEBE GARANTIZAR UNA TRACCION PURAMENTE AXIAL DEL MUELLE
 THE SHAPE OF THE HOOK MUST WARRANT A PURE AXIAL TRACION
 LA FORMA DEL GANCIO DEVE GARANTIRE UNA TRAZIONE PURAMENTE ASSIALE DELLA MOLLA



BARRA KUBAR 8 KUBAR 8 ARM

CODIGO CODE CODICE	DIAMETRO DIAMETER DIAMETRO	MEDIO AVERAGE MEDIO	MATERIAL MATERIAL MATERIALE	MUELLE SPRING MOLLE	ESPIRAS UTILS SPIRE	UTILS TURNS UTILI	FLECHA/ AXLE/ FRECCIA	CARGA LIFT CARICO	FLECHA/ AXLE/ FRECCIA	CARGA LIFT CARICO	FLECHA/ AXLE/ FRECCIA	CARGA LIFT CARICO	DIAMETRO HILO DE HOOK WIRE	HILLO DIAMETER FILO	RADIO R RAGGIO	RADIO R RAGGIO	DISTANCIA A ALTEZZA	DISTANCIA A ALTEZZA	CERRADO CLOSED CHIUSO	EXTENSO EXTENDED ESTESA	LONGITUD LENGTH LUNGHEZZA
MTK68	5,5	36	C5,5	uni3825	85	200/46Kg	300/68Kg	350/80Kg	6	15	30	580	900	6	15	30	30	580	900	580	900
MTK90	6	38	C6	uni3825	83	200/55Kg	260/73Kg	320/90Kg	6	15	30	580	900	6	15	30	30	580	900	580	900
MTK165	7	40	C7	uni3825	72	200/100Kg	260/135Kg	320/165Kg	8,5	15	35	580	900	6	15	30	35	580	900	580	900
	5	35	C5	uni3825	100	200/30Kg	300/45Kg	350/53Kg	6	15	30	580	900	6	15	30	30	580	900	580	900

BARRA KUBAR 6 KUBAR 6 ARM

CODIGO CODE CODICE	DIAMETRO DIAMETER DIAMETRO	MEDIO AVERAGE MEDIO	MATERIAL MATERIAL MATERIALE	MUELLE SPRING MOLLE	ESPIRAS UTILS SPIRE	UTILS TURNS UTILI	FLECHA/ AXLE/ FRECCIA	CARGA LIFT CARICO	FLECHA/ AXLE/ FRECCIA	CARGA LIFT CARICO	FLECHA/ AXLE/ FRECCIA	CARGA LIFT CARICO	DIAMETRO HILO DE HOOK WIRE	HILLO DIAMETER FILO	RADIO R RAGGIO	RADIO R RAGGIO	DISTANCIA A ALTEZZA	DISTANCIA A ALTEZZA	CERRADO CLOSED CHIUSO	EXTENSO EXTENDED ESTESA	LONGITUD LENGTH LUNGHEZZA
MTK52	2,5	22	C2,5	uni3825	190	200/4Kg	260/5Kg	350	4	10	20	540	810	4	10	20	20	540	810	540	810
MTK252	3,5	26.5	C3,5	uni3825	88	200/25Kg	300/37Kg	320	6	15	30	390	540	6	15	30	30	390	540	390	540
MTK702	4,5	28	C4,5	uni3825	80	200/55Kg	260/72Kg	320	6	15	30	440	720	6	15	30	30	440	720	440	720
MTK852	5	30	C5	uni3825	70	200/85Kg	260/115Kg	350	6	15	30	440	720	6	15	30	30	440	720	440	720

